

RoHS Compliant

1212 SERIES 7P SATA CONN., 180° SMT TYPE

REV	DATE	DESCRIPTION	ECN NO.	NAME
A	12.12.26	PROPOSAL		LRP

MATERIAL

HOUSING: LCP+30%G.F(UL94V-0)
 HOUSING COLOR: BLACK
 TERMINAL: BRASS
 TERMINAL PLATING: 5u". Au IN CONTACT AREA, 100u". Sn IN SOLDER TAIL AREA, BOTH OVER 50u". Ni UNDER PLATED OVERALL

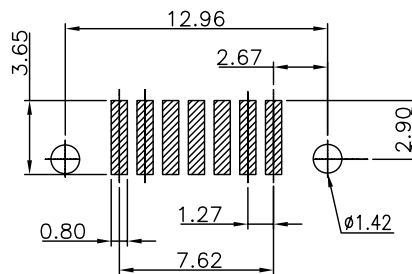
HARPOON: BRASS
 HARPOON PLATING: Sn PLATED
 CAP: LCP+30%G.F(UL94V-0)
 CAP COLOR: BLACK

ORDER INFORMATION
 G1212-94 ** ** *-00

HOUSING MATERIAL&COLOR
 00: LCP; BLACK

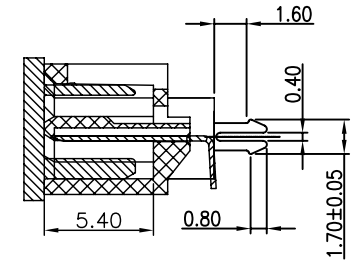
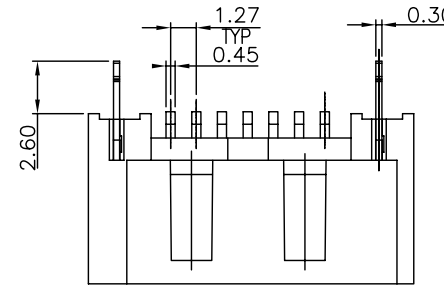
TERMINAL PLATING
 01: 5u" Au

PINS
 00: 7PIN

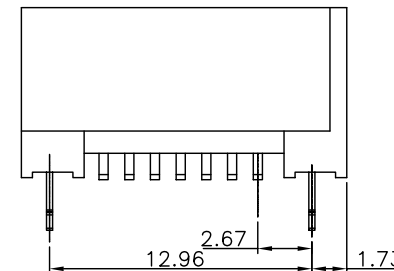
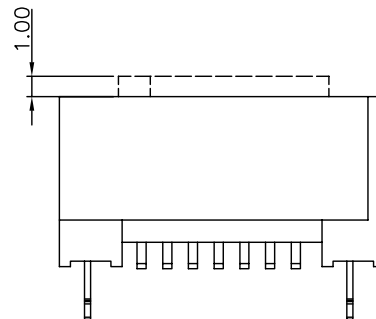
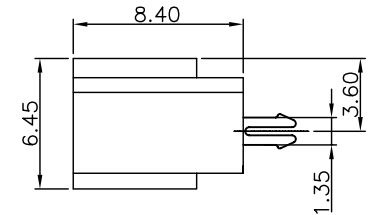
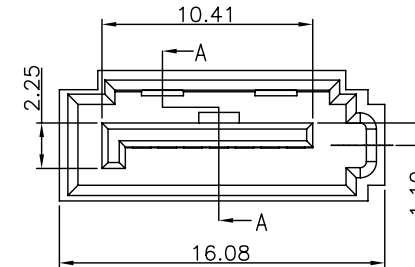
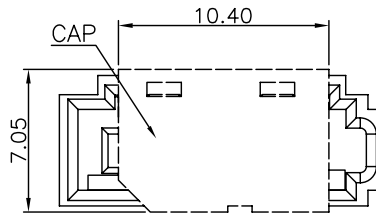


RECOMMENDED P.C.BOARD HOLE LAYOUT

NOTE: 1. P.C.B LAYOUT TOLERANCE: ±0.05mm
 2. SMT COPLANARITY TOLERANCE Max: 0.10mm



SECTION A-A



GENERAL TOLERANCE ± 0.25 mm GENERAL ANGLE TOLERANCE ± 3°	WIESON TECHNOLOGIES CO., LTD	PART NO.: G1212-94*****-00		
	DRAWN BY	LRP(WSC)	DRAWING NO.	G1212-94*****-00
	CHECKED BY	JINKENS	DRAWING SIZE	A4
	APPROVED BY	JINKENS	UNIT	mm
		SORTING NO.	CA0089(WSC)	PAGE

PROPOSAL

[ARTICLE:044033 V4]