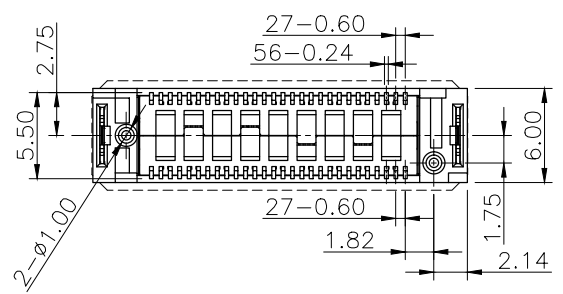
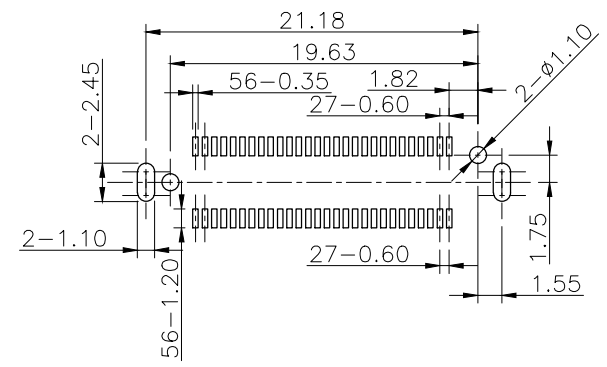
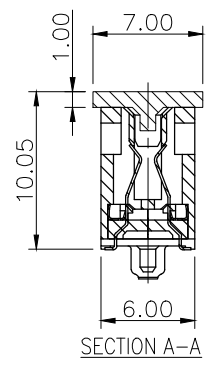
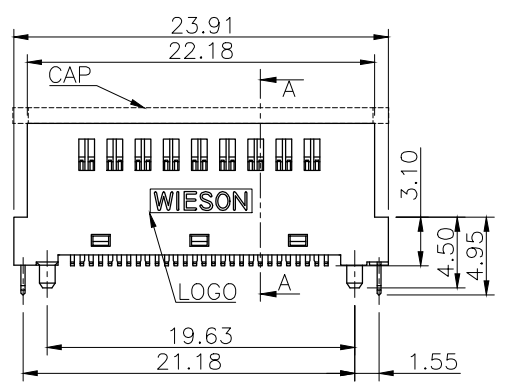
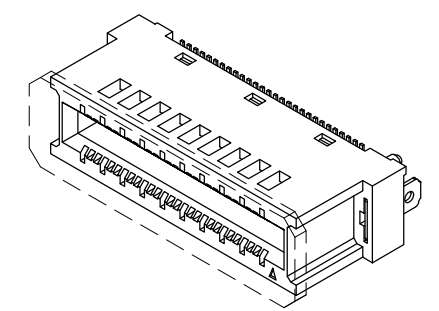
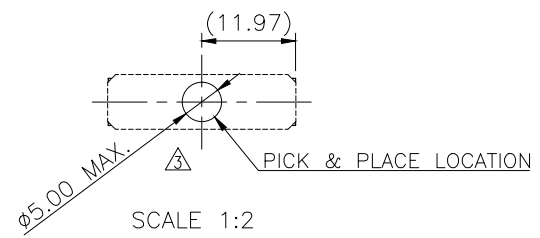
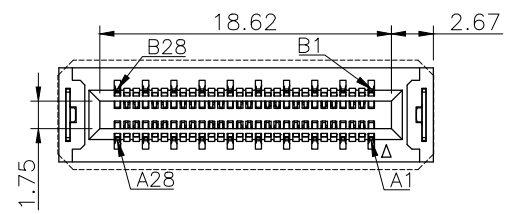


RoHS Compliant

6155-SERIES SFF TA-1002 VERTICAL CONNECTOR FOR 1C

REV	DATE	DESCRIPTION	ECN NO.	NAME
A	19.8.8	PROPOSAL		Tony
A1	19.9.16	ADD 4C/4C+ TYPE		Tony
A2	19.11.04	MODIFY DESCRIPTION		Tony
A3	19.12.10	ADD PICK & PLACE		Tony

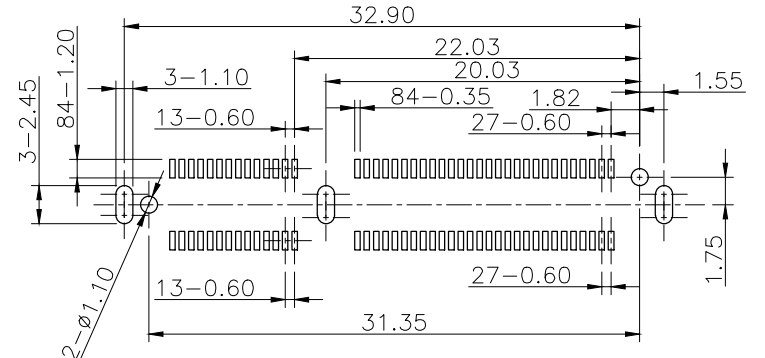
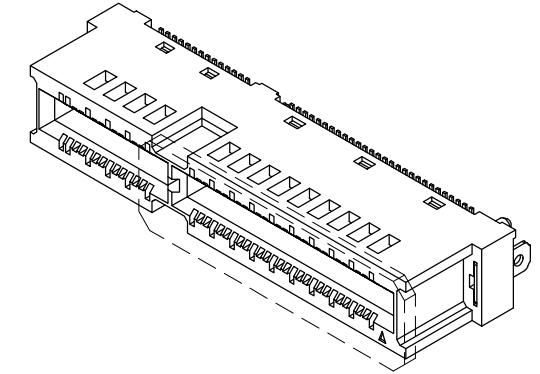
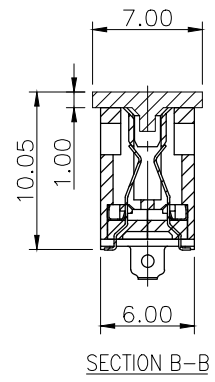
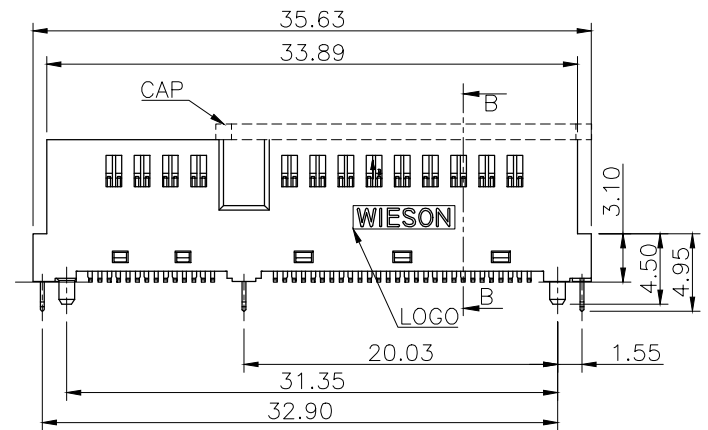
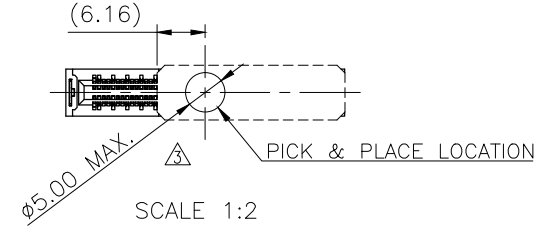
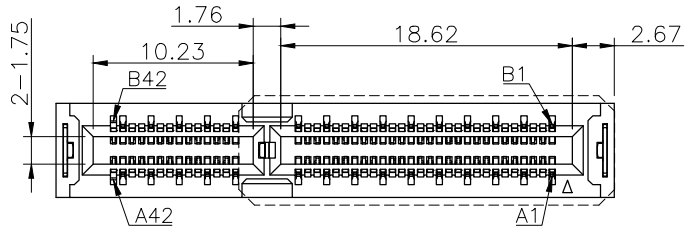


GENERAL TOLERANCE		WIESON TECHNOLOGIES CO., LTD WIESON	PART NO.: G6155-20XXXXXX-00		
X.X	±0.20		DRAWN BY	Tony	
X.XX	±0.15	CHECKED BY		DRAWING NO.	G6155-20XXXXXX-00
X.X*	±3°	APPROVED BY		DRAWING SIZE	2 : 1 A4
⊕		SORTING NO.	WSC	UNIT	mm
				PAGE	1 OF 7

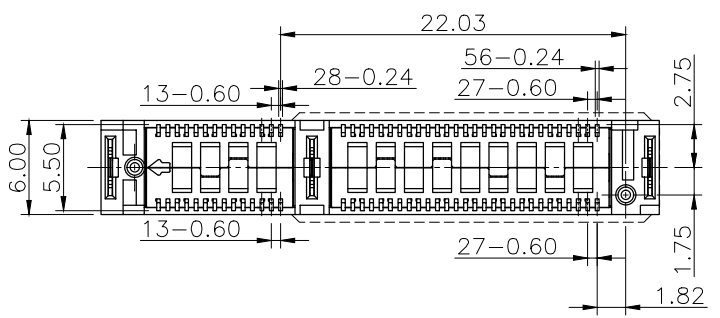
RoHS Compliant

6155-SERIES SFF TA-1002 VERTICAL CONNECTOR FOR 2C Δ

REV	DATE	DESCRIPTION	ECN NO.	NAME
A	19.8.8	PROPOSAL		Tony
A1	19.9.16	Δ ADD 4C/4C+ TYPE		Tony
A2	19.11.04	Δ MODIFY DESCRIPTION		Tony
A3	19.12.10	Δ ADD PICK & PLACE		Tony



RECOMMENDED 2C PCB LAYOUT TOP VIEW

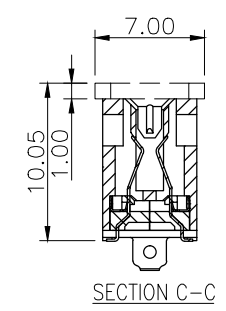
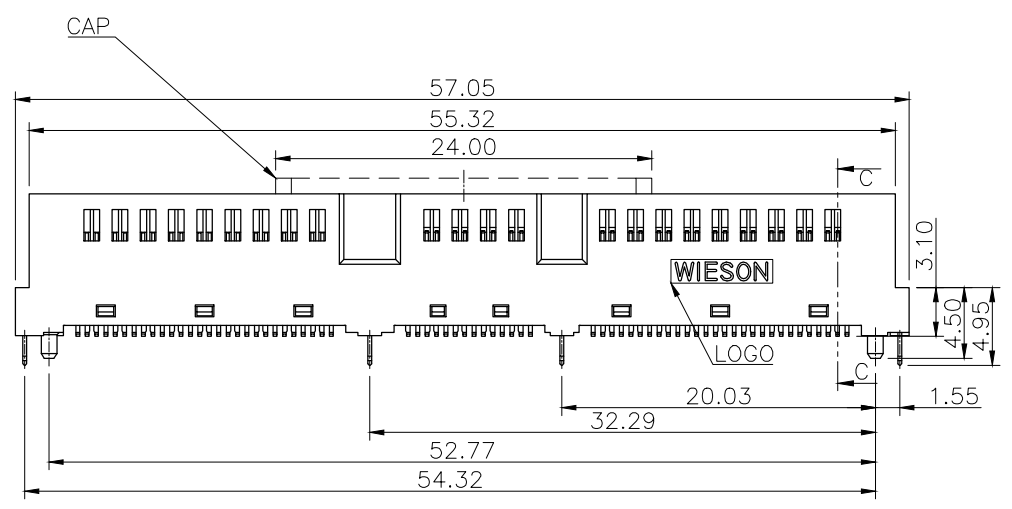
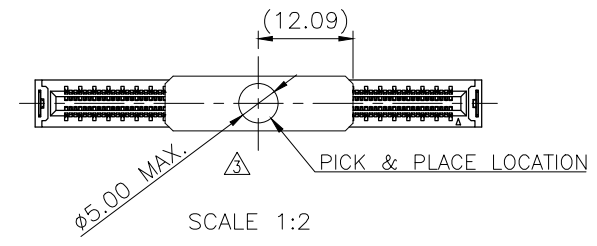
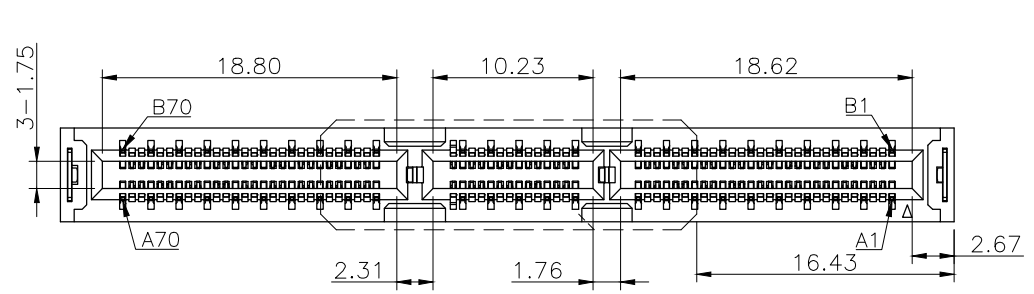


GENERAL TOLERANCE	<p>WIESON TECHNOLOGIES CO., LTD</p>	PART NO.: G6155-20XXXXXX-00			
X.X = ±0.20		DRAWN BY	Tony	DRAWING NO.	G6155-20XXXXXX-00
X.XX = ±0.15		CHECKED BY		DRAWING SIZE	2 : 1 A4
X.X* = ±3°		APPROVED BY		UNIT	mm
		SORTING NO.	WSC	PAGE	2 OF 7

RoHS Compliant

6155-SERIES SFF TA-1002 VERTICAL CONNECTOR FOR 4C Δ Δ

REV	DATE	DESCRIPTION	ECN NO.	NAME
A	19.8.8	PROPOSAL		Tony
A1	19.9.16	Δ ADD 4C/4C+ TYPE		Tony
A2	19.11.04	Δ MODIFY DESCRIPTION		Tony
A3	19.12.10	Δ ADD PICK & PLACE		Tony

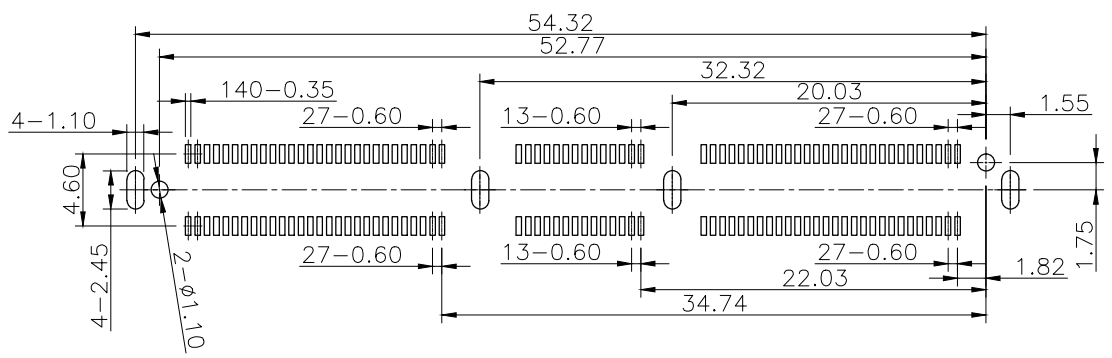
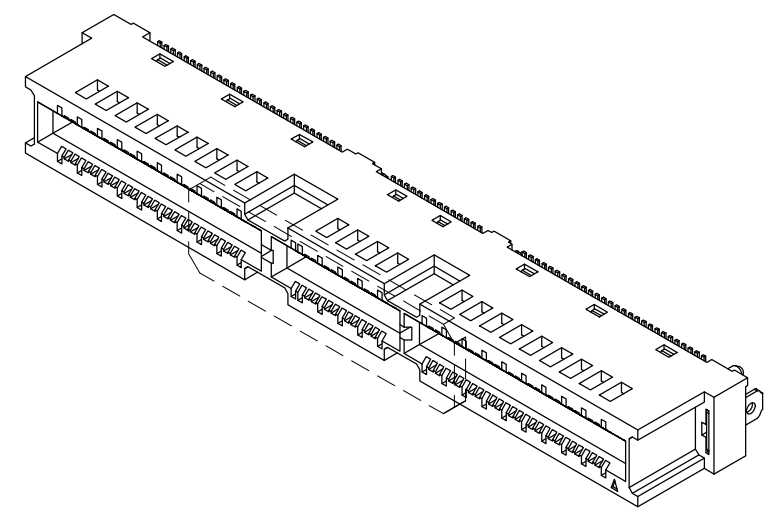
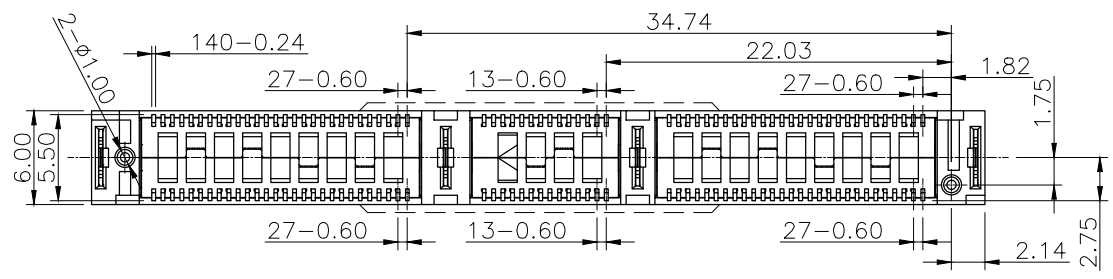


GENERAL TOLERANCE X.X = ± 0.20 X.XX = ± 0.15 X.X* = $\pm 3^\circ$	WIESON TECHNOLOGIES CO., LTD		PART NO.: G6155-20XXXXXX-00	
	DRAWN BY	Tony	DRAWING NO.	G6155-20XXXXXX-00
	CHECKED BY	Hsien	DRAWING SIZE	2 : 1 A4
	APPROVED BY	Hsien	UNIT	mm
	SORTING NO.	WSC	PAGE	3 OF 7

RoHS Compliant

6155-SERIES SFF TA-1002 VERTICAL CONNECTOR FOR 4C Δ Δ

REV	DATE	DESCRIPTION	ECN NO.	NAME
A	19.8.8	PROPOSAL		Tony
A1	19.9.16	Δ ADD 4C/4C+ TYPE		Tony
A2	19.11.04	Δ MODIFY DESCRIPTION		Tony
A3	19.12.10	Δ ADD PICK & PLACE		Tony



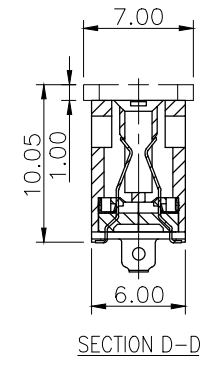
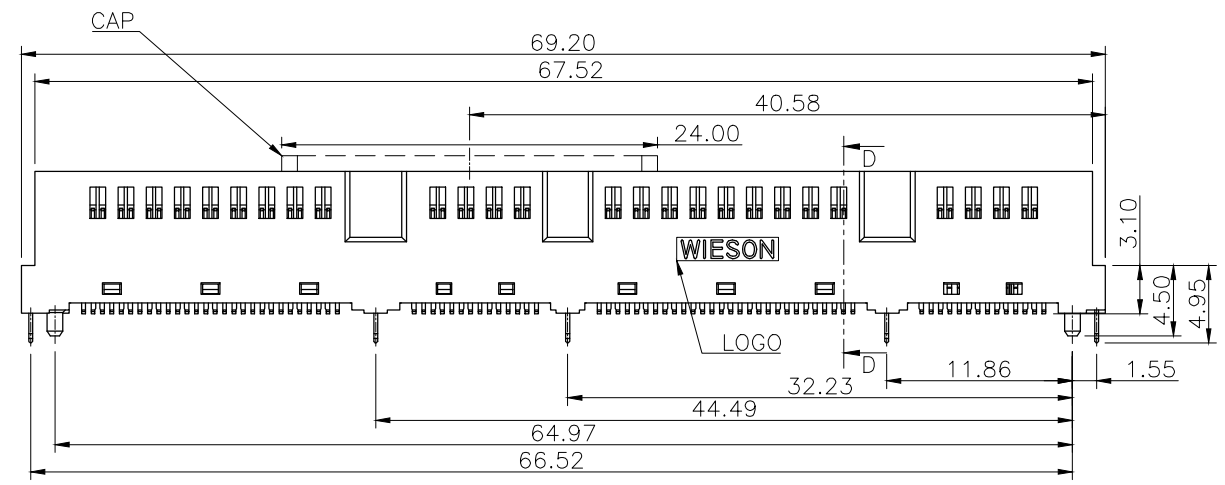
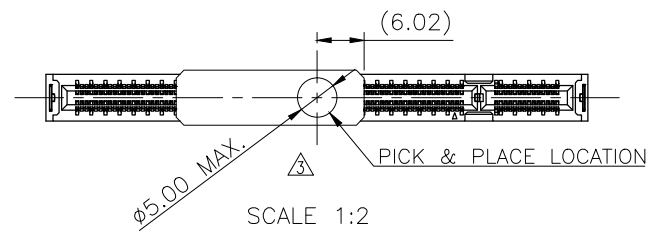
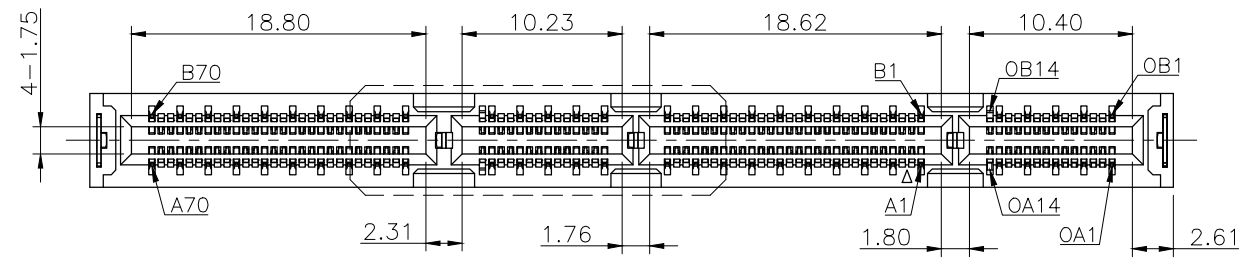
RECOMMENDED 4C PCB LAYOUT
TOP VIEW

GENERAL TOLERANCE X.X = ± 0.20 X.XX = ± 0.15 X.X* = $\pm 3^\circ$	WIESON TECHNOLOGIES CO., LTD		PART NO.: G6155-20XXXXXX-00	
	DRAWN BY	Tony	DRAWING NO.	G6155-20XXXXXX-00
	CHECKED BY		DRAWING SIZE	2 : 1 A4
	APPROVED BY		UNIT	mm
	SORTING NO.	WSC	PAGE	4 OF 7

RoHS Compliant

6155-SERIES SFF TA-1002 VERTICAL CONNECTOR FOR 4C+ Δ Δ

REV	DATE	DESCRIPTION	ECN NO.	NAME
A	19.8.8	PROPOSAL		Tony
A1	19.9.16	Δ ADD 4C/4C+ TYPE		Tony
A2	19.11.04	Δ MODIFY DESCRIPTION		Tony
A3	19.12.10	Δ ADD PICK & PLACE		Tony

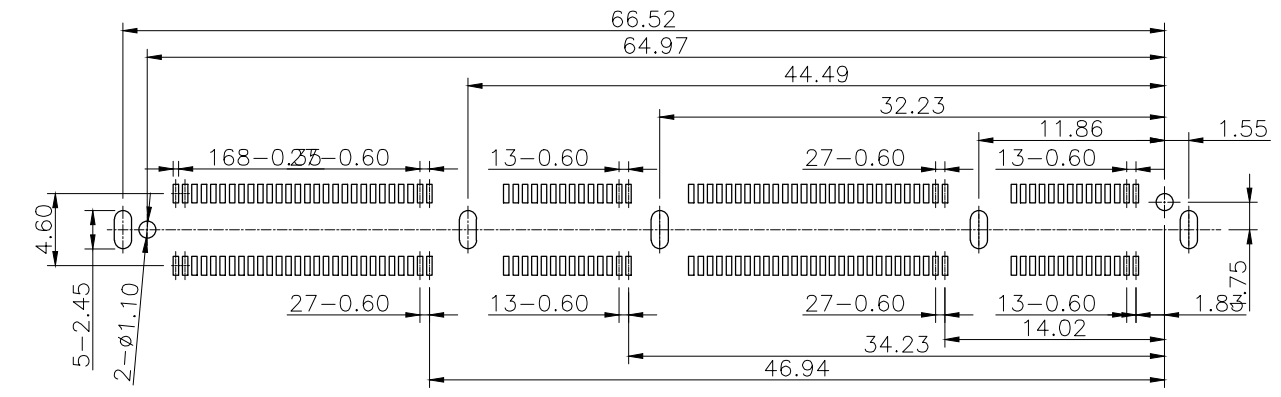
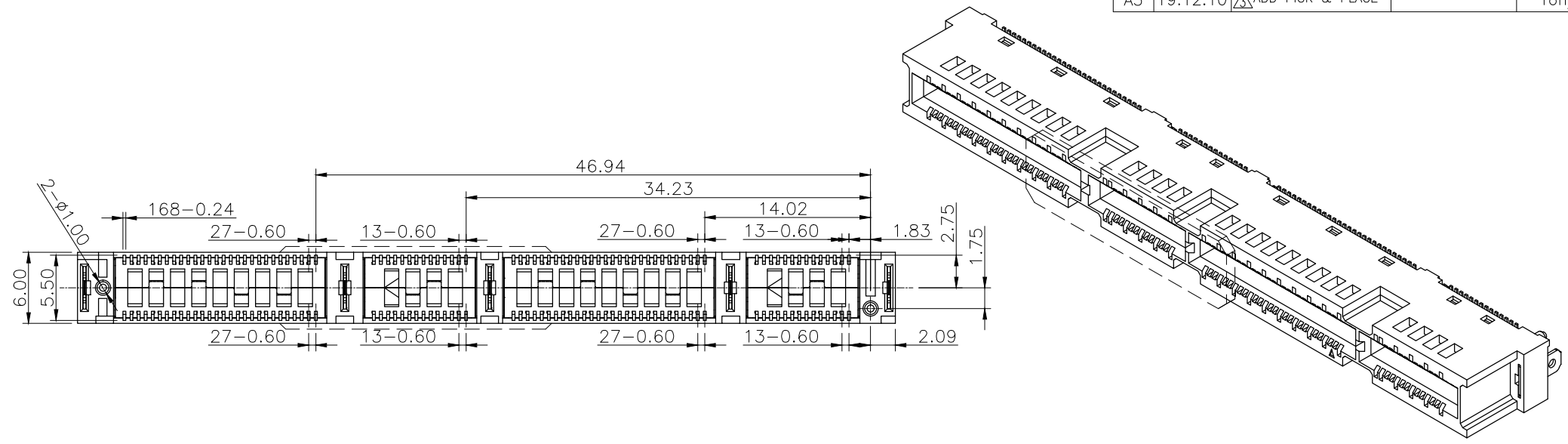


GENERAL TOLERANCE X.X = ± 0.20 X.XX = ± 0.15 X.X* = $\pm 3^\circ$	WIESON TECHNOLOGIES CO., LTD		PART NO.: G6155-20XXXXXX-00	
	DRAWN BY	Tony	DRAWING NO.	G6155-20XXXXXX-00
	CHECKED BY		DRAWING SIZE	2 : 1 A4
	APPROVED BY		UNIT	mm
		SORTING NO.	WSC	PAGE

RoHS Compliant

6155-SERIES SFF TA-1002 VERTICAL CONNECTOR FOR 4C+ Δ Δ

REV	DATE	DESCRIPTION	ECN NO.	NAME
A	19.8.8	PROPOSAL		Tony
A1	19.9.16	Δ ADD 4C/4C+ TYPE		Tony
A2	19.11.04	Δ MODIFY DESCRIPTION		Tony
A3	19.12.10	Δ ADD PICK & PLACE		Tony



RECOMMENDED 4C+ PCB LAYOUT
TOP VIEW

GENERAL TOLERANCE		 WIESON TECHNOLOGIES CO., LTD	PART NO.: G6155-20XXXXXX-00		
X.X	=±0.20		DRAWN BY	Tony	DRAWING NO.
X.XX	=±0.15	CHECKED BY		DRAWING SIZE	2 : 1 A4
X.X*	=±3°	APPROVED BY		UNIT	mm
		SORTING NO.	WSC	PAGE	6 OF 7

RoHS Compliant

6155-SERIES SFF TA-1002 VERTICAL CONNECTOR Δ

REV	DATE	DESCRIPTION	ECN NO.	NAME
A	19.8.8	PROPOSAL		Tony
A1	19.9.16	Δ ADD 4C/4C+ TYPE		Tony
A2	19.11.04	Δ MODIFY DESCRIPTION		Tony
A3	19.12.10	Δ ADD PICK & PLACE		Tony

CONTACT NUMBER	SIDE A	SIDE B	CONTACT NUMBER	SIDE A	SIDE B	CONTACT NUMBER	SIDE A	SIDE B
1	GND	GND	29	GND	GND	57	SIGNAL	SIGNAL
2	SIGNAL	SIGNAL	30	SIGNAL	SIGNAL	58	GND	GND
3	SIGNAL	SIGNAL	31	SIGNAL	SIGNAL	59	SIGNAL	SIGNAL
4	GND	GND	32	GND	GND	60	SIGNAL	SIGNAL
5	SIGNAL	SIGNAL	33	SIGNAL	SIGNAL	61	GND	GND
6	SIGNAL	SIGNAL	34	SIGNAL	SIGNAL	62	SIGNAL	SIGNAL
7	GND	GND	35	GND	GND	63	SIGNAL	SIGNAL
8	SIGNAL	SIGNAL	36	SIGNAL	SIGNAL	64	GND	GND
9	SIGNAL	SIGNAL	37	SIGNAL	SIGNAL	65	SIGNAL	SIGNAL
10	GND	GND	38	GND	GND	66	SIGNAL	SIGNAL
11	SIGNAL	SIGNAL	39	SIGNAL	SIGNAL	67	GND	GND
12	SIGNAL	SIGNAL	40	SIGNAL	SIGNAL	68	SIGNAL	SIGNAL
13	GND	GND	41	GND	GND	69	SIGNAL	SIGNAL
14	SIGNAL	SIGNAL	42	GND	GND	70	GND	GND
15	SIGNAL	SIGNAL	43	GND	GND	01	GND	GND
16	GND	GND	44	SIGNAL	SIGNAL	02	SIGNAL	SIGNAL
17	SIGNAL	SIGNAL	45	SIGNAL	SIGNAL	03	SIGNAL	SIGNAL
18	SIGNAL	SIGNAL	46	GND	GND	04	GND	GND
19	GND	GND	47	SIGNAL	SIGNAL	05	SIGNAL	SIGNAL
20	SIGNAL	SIGNAL	48	SIGNAL	SIGNAL	06	SIGNAL	SIGNAL
21	SIGNAL	SIGNAL	49	GND	GND	07	GND	GND
22	GND	GND	50	SIGNAL	SIGNAL	08	SIGNAL	SIGNAL
23	SIGNAL	SIGNAL	51	SIGNAL	SIGNAL	09	SIGNAL	SIGNAL
24	SIGNAL	SIGNAL	52	GND	GND	010	GND	GND
25	GND	GND	53	SIGNAL	SIGNAL	011	SIGNAL	SIGNAL
26	SIGNAL	SIGNAL	54	SIGNAL	SIGNAL	012	SIGNAL	SIGNAL
27	SIGNAL	SIGNAL	55	GND	GND	013	GND	GND
28	GND	GND	56	SIGNAL	SIGNAL	014	GND	GND

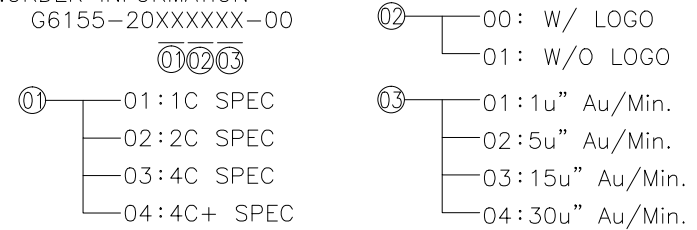
Δ NOTE:

1.MATERIAL:
 HOUSING:LCP UL94V-0 BLACK
 MOLDING:LCP UL94V-0 BLACK
 CAP:LCP UL94V-0 BLACK
 TERMINAL: COPPER ALLOY T=0.15
 GROUND: SUS T=0.10
 BOARD LOCK:SUS T=0.25

2.PLATING:
 TERMINAL:SELECTUVE Au ON CONTACT AREA,
 (SEE ORDER INFORMATION)
 BOTH OVER 50u" MIN. Ni UNDERPLATED OVERALL.
 TINNED AREA 50u"~150u" Sn
 GROUND:CLEAN.
 BOARD LOCK:BOTH OVER 50u" MIN.
 Ni UNDERPLATED OVERALL.50u"~150u" Sn PLATED OVERALL

3.PACKING : 1C.2C.4C T&R 4C+ TRAY

4.ORDER INFORMATION:



CONTACT NUMBER	1-28	29-42	43-70	01-014
PRODUCT TYPE	1C	X		
	2C		X	
	4C			X
	4C+			

GENERAL TOLERANCE	WIESON TECHNOLOGIES CO., LTD	PART NO.: G6155-20XXXXXX-00		
X.X = ±0.20		DRAWN BY	Tony	DRAWING NO.
X.XX = ±0.15	CHECKED BY		DRAWING SIZE	2 : 1 A4
X.X* = ±3*	APPROVED BY		UNIT	mm
SORTING NO.	WSC	PAGE	7 OF 7	